



COMPASS

Queens Luxury Report

June 02 - 08, 2025, Residential Contracts \$1.25M+

Photo: 46-30 Center Blvd, Unit PH8

The Queens luxury real estate market, defined as all properties priced \$1.25M and above, saw 15 contracts signed this week, made up of 11 condos, and 4 houses. The previous week saw 25 deals. For more information or data, please reach out to a Compass agent.

\$1,862,851

Average Asking Price

\$1,650,000

Median Asking Price

\$1,439

Average PPSF

0%

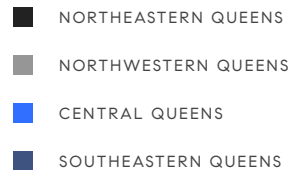
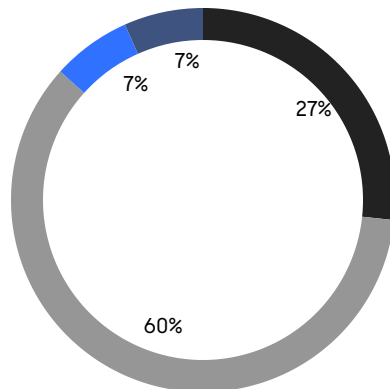
Average Discount

\$27,942,762

Total Volume

153

Average Days On Market



11

Condo Deal(s)

0

Co-op Deal(s)

4

Single-Family Deal(s)

\$1,894,353

Average Asking Price

\$0

Average Asking Price

\$1,776,222

Average Asking Price

\$1,999,000

Median Asking Price

\$0

Median Asking Price

\$1,524,000

Median Asking Price

\$1,712

Average PPSF

\$688

Average PPSF

1,171

Average SqFt

2,592

Average SqFt



28-05 216th Street

Bayside

Contract Signed

| | | | | | | | |
|------|-------|---------|-------------|---------|-------|-------|---|
| Type | House | Price | \$2,668,000 | Sq. Ft. | 3,800 | Beds | 5 |
| DOM | 35 | Initial | \$2,668,000 | PPSF | \$703 | Baths | 3 |

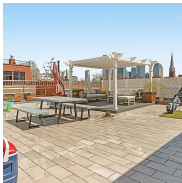


3 Court Square, Unit 2411

Long Island City

Contract Signed

| | | | | | | | |
|------|-------|---------|-------------|---------|---------|-------|---|
| Type | Condo | Price | \$2,650,000 | Sq. Ft. | 1,272 | Beds | 2 |
| DOM | 124 | Initial | \$2,650,000 | PPSF | \$2,084 | Baths | 2 |



50-01 5th St, Unit 4A

Long Island City

Contract Signed

| | | | | | | | |
|------|-------|---------|-------------|---------|---------|-------|---|
| Type | Condo | Price | \$2,588,000 | Sq. Ft. | 1,542 | Beds | 2 |
| DOM | 483 | Initial | \$2,399,000 | PPSF | \$1,679 | Baths | 2 |



11-36 45th Road, Unit PH2A

Long Island City

Contract Signed

| | | | | | | | |
|------|-------|---------|-------------|---------|---------|-------|---|
| Type | Condo | Price | \$2,125,000 | Sq. Ft. | 1,136 | Beds | 3 |
| DOM | - | Initial | \$2,125,000 | PPSF | \$1,871 | Baths | 2 |

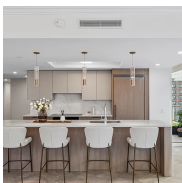


11-36 45th Road, Unit 605A

Long Island City

Contract Signed

| | | | | | | | |
|------|-------|---------|-------------|---------|---------|-------|---|
| Type | Condo | Price | \$2,040,000 | Sq. Ft. | 1,135 | Beds | 3 |
| DOM | - | Initial | \$2,040,000 | PPSF | \$1,798 | Baths | 2 |



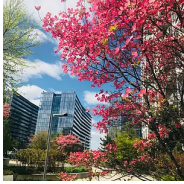
78-29 Austin St, Unit 311

Forest Hills

Contract Signed

| | | | | | | | |
|------|-------|---------|-------------|---------|---------|-------|-----|
| Type | Condo | Price | \$2,030,875 | Sq. Ft. | 1,813 | Beds | 3 |
| DOM | 182 | Initial | \$2,030,875 | PPSF | \$1,121 | Baths | 2.5 |

Compass is a licensed real estate broker and abides by Equal Housing Opportunity laws. All material presented herein is intended for informational purposes only. Information is compiled from sources deemed reliable but is subject to errors, omissions, changes in price, condition, sale, or withdrawal without notice. No statement is made as to the accuracy of any description. All measurements and square footages are approximate. This is not intended to solicit property already listed. Nothing herein shall be construed as legal, accounting or other professional advice outside the realm of real estate brokerage.



131-01 40th Road, Unit M

Flushing

Contract Signed

| | | | | | | | |
|------|-------|---------|-------------|---------|---------|-------|---|
| Type | Condo | Price | \$1,999,000 | Sq. Ft. | 1,950 | Beds | 3 |
| DOM | 381 | Initial | \$1,999,000 | PPSF | \$1,026 | Baths | 3 |



173-73 Croydon Road

Jamaica Estates

Contract Signed

| | | | | | | | |
|------|-------|---------|-------------|---------|-------|-------|---|
| Type | House | Price | \$1,650,000 | Sq. Ft. | 2,647 | Beds | 3 |
| DOM | 20 | Initial | \$1,650,000 | PPSF | \$624 | Baths | 2 |



11-36 45th Road, Unit 401A

Long Island City

Contract Signed

| | | | | | | | |
|------|-------|---------|-------------|---------|---------|-------|---|
| Type | Condo | Price | \$1,630,000 | Sq. Ft. | 901 | Beds | 2 |
| DOM | 28 | Initial | \$1,630,000 | PPSF | \$1,810 | Baths | 2 |

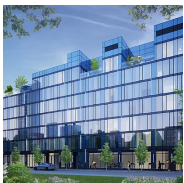


11-36 45th Road, Unit 609A

Long Island City

Contract Signed

| | | | | | | | |
|------|-------|---------|-------------|---------|---------|-------|---|
| Type | Condo | Price | \$1,620,000 | Sq. Ft. | 909 | Beds | 2 |
| DOM | - | Initial | \$1,620,000 | PPSF | \$1,783 | Baths | 2 |



11-36 45th Road, Unit 504A

Long Island City

Contract Signed

| | | | | | | | |
|------|-------|---------|-------------|---------|---------|-------|---|
| Type | Condo | Price | \$1,550,000 | Sq. Ft. | 817 | Beds | 2 |
| DOM | - | Initial | \$1,550,000 | PPSF | \$1,898 | Baths | 2 |



35-31 210th Street

Bayside

Contract Signed

| | | | | | | | |
|------|-------|---------|-------------|---------|-------|-------|---|
| Type | House | Price | \$1,398,000 | Sq. Ft. | 2,000 | Beds | 4 |
| DOM | 69 | Initial | \$1,480,000 | PPSF | \$699 | Baths | 2 |

Compass is a licensed real estate broker and abides by Equal Housing Opportunity laws. All material presented herein is intended for informational purposes only. Information is compiled from sources deemed reliable but is subject to errors, omissions, changes in price, condition, sale, or withdrawal without notice. No statement is made as to the accuracy of any description. All measurements and square footages are approximate. This is not intended to solicit property already listed. Nothing herein shall be construed as legal, accounting or other professional advice outside the realm of real estate brokerage.



240-25 Alameda Avenue

Douglaston

Contract Signed

| | | | | | | | |
|------|-------|---------|-------------|---------|-------|-------|---|
| Type | House | Price | \$1,388,888 | Sq. Ft. | 1,918 | Beds | 4 |
| DOM | 113 | Initial | \$1,588,000 | PPSF | \$725 | Baths | 3 |

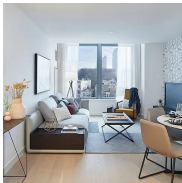


22-18 Jackson Ave, Unit 801

Long Island City

Contract Signed

| | | | | | | | |
|------|-------|---------|-------------|---------|---------|-------|---|
| Type | Condo | Price | \$1,325,000 | Sq. Ft. | 763 | Beds | 1 |
| DOM | 31 | Initial | \$1,325,000 | PPSF | \$1,737 | Baths | 1 |



3 Court Square, Unit 5805

Long Island City

Contract Signed

| | | | | | | | |
|------|-------|---------|-------------|---------|---------|-------|---|
| Type | Condo | Price | \$1,279,999 | Sq. Ft. | 634 | Beds | 1 |
| DOM | 207 | Initial | \$1,329,085 | PPSF | \$2,019 | Baths | 1 |

Compass is a licensed real estate broker and abides by Equal Housing Opportunity laws. All material presented herein is intended for informational purposes only. Information is compiled from sources deemed reliable but is subject to errors, omissions, changes in price, condition, sale, or withdrawal without notice. No statement is made as to the accuracy of any description. All measurements and square footages are approximate. This is not intended to solicit property already listed. Nothing herein shall be construed as legal, accounting or other professional advice outside the realm of real estate brokerage.